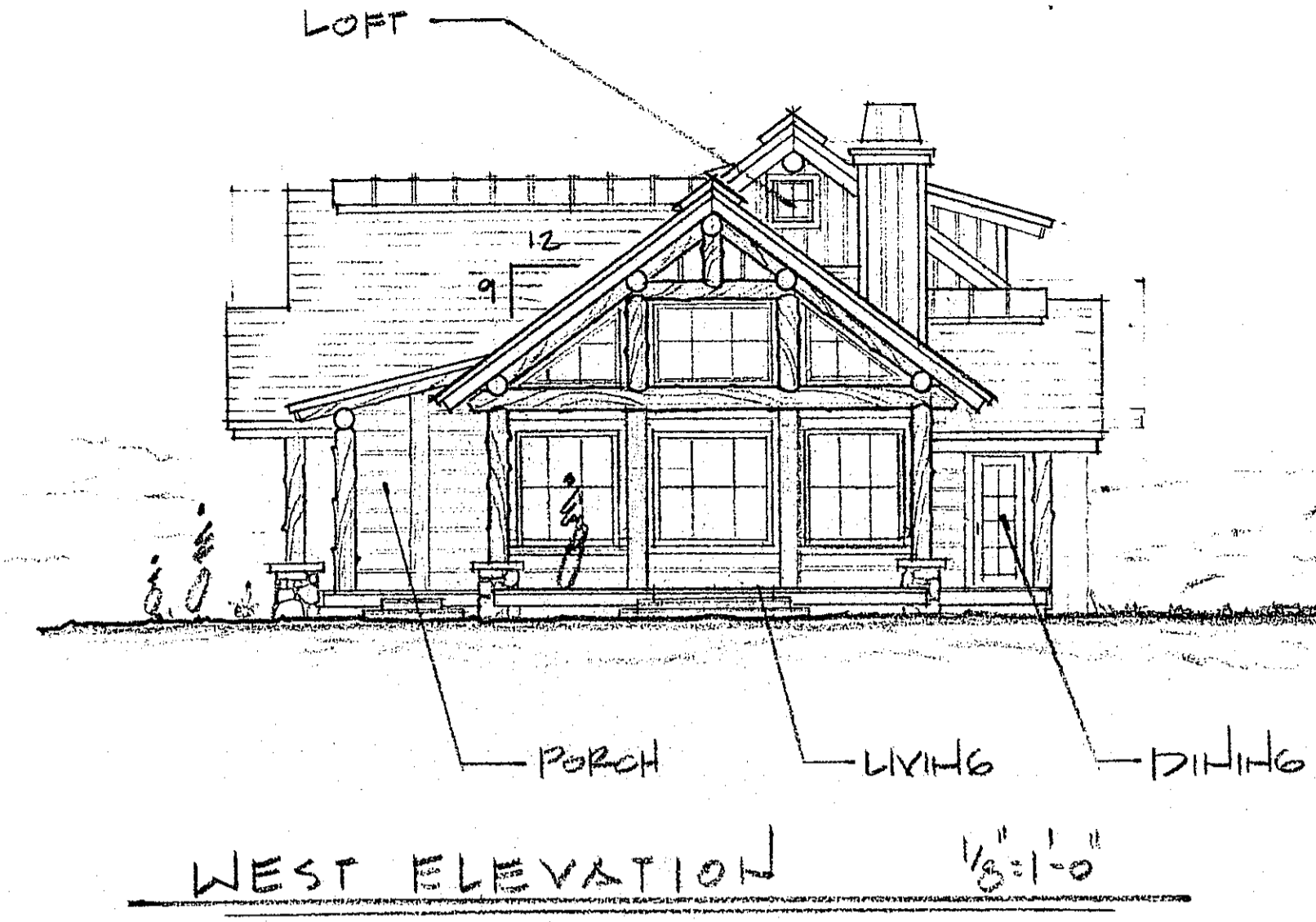
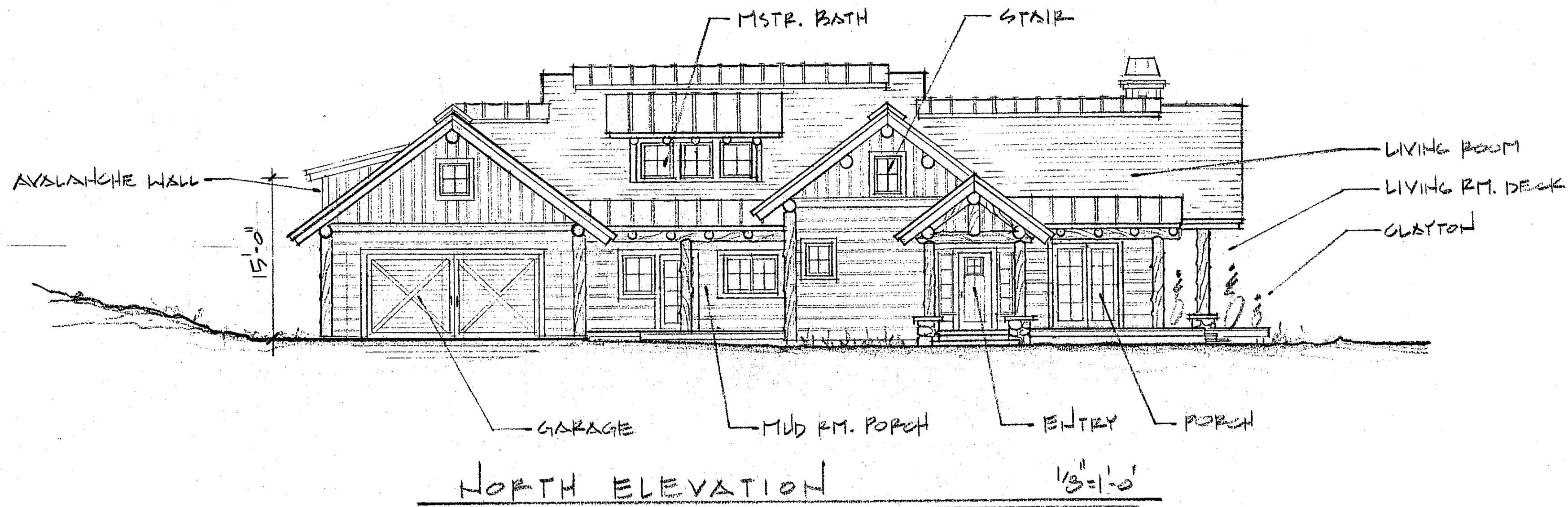
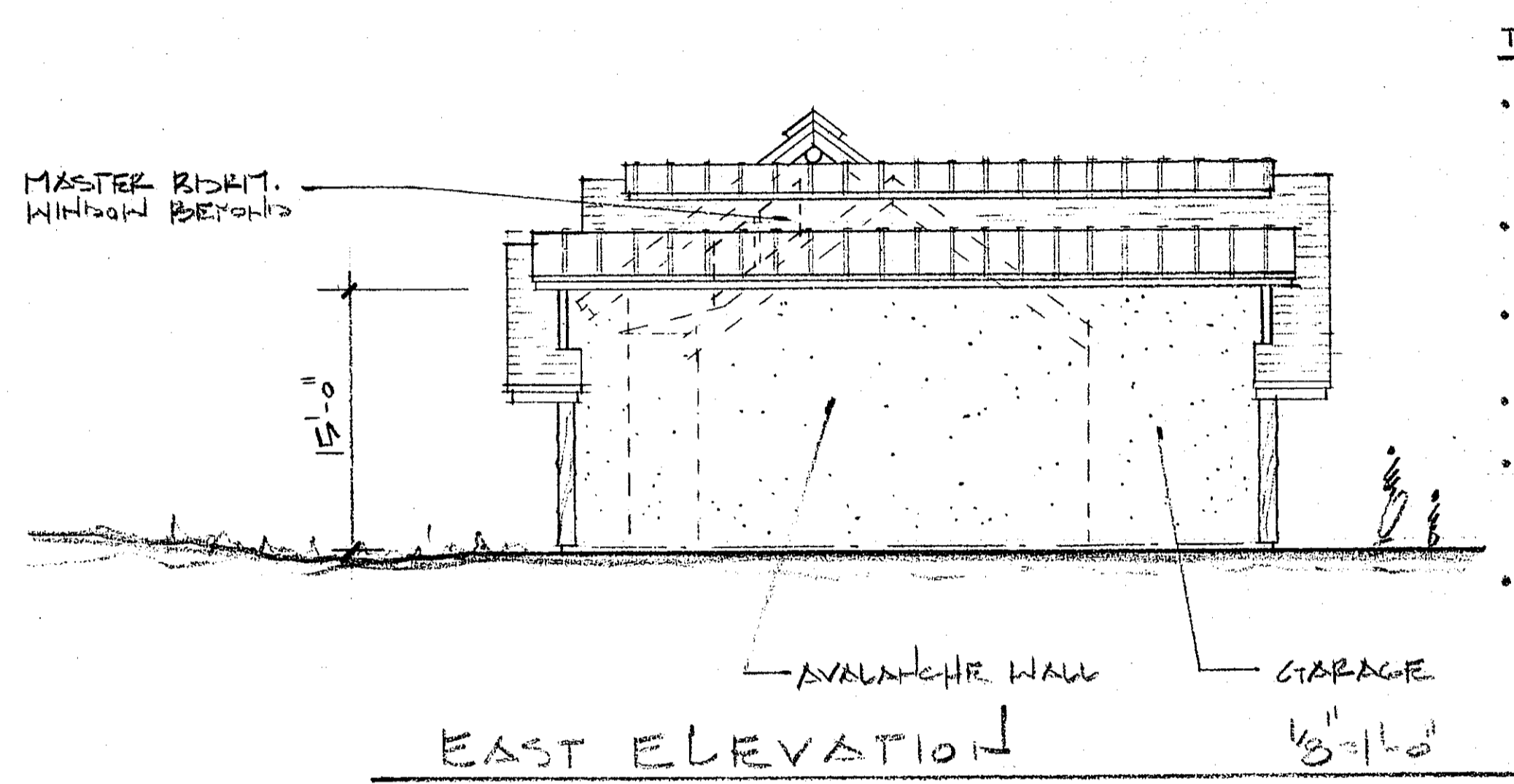


OWNERSHIP OF DOCUMENTS: This document, and the ideas and designs incorporated herein, as an instrument of professional service, is the property of RUSCOTTO/LATHAM/BLANTON ARCHITECTURE P.A., and is not to be used, in whole or in part, for any other project without the written authorization of RUSCOTTO/LATHAM/BLANTON ARCHITECTURE P.A.



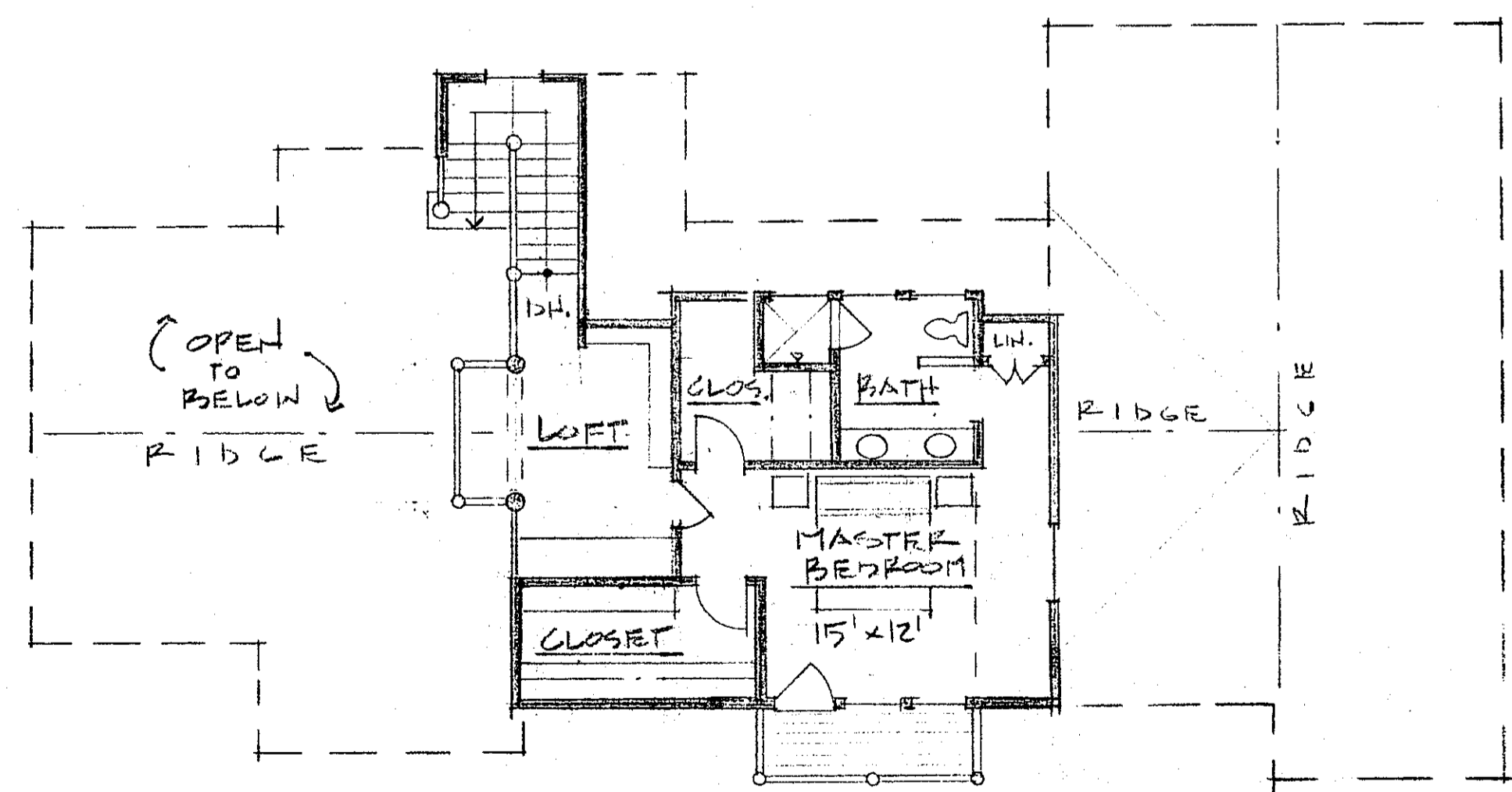
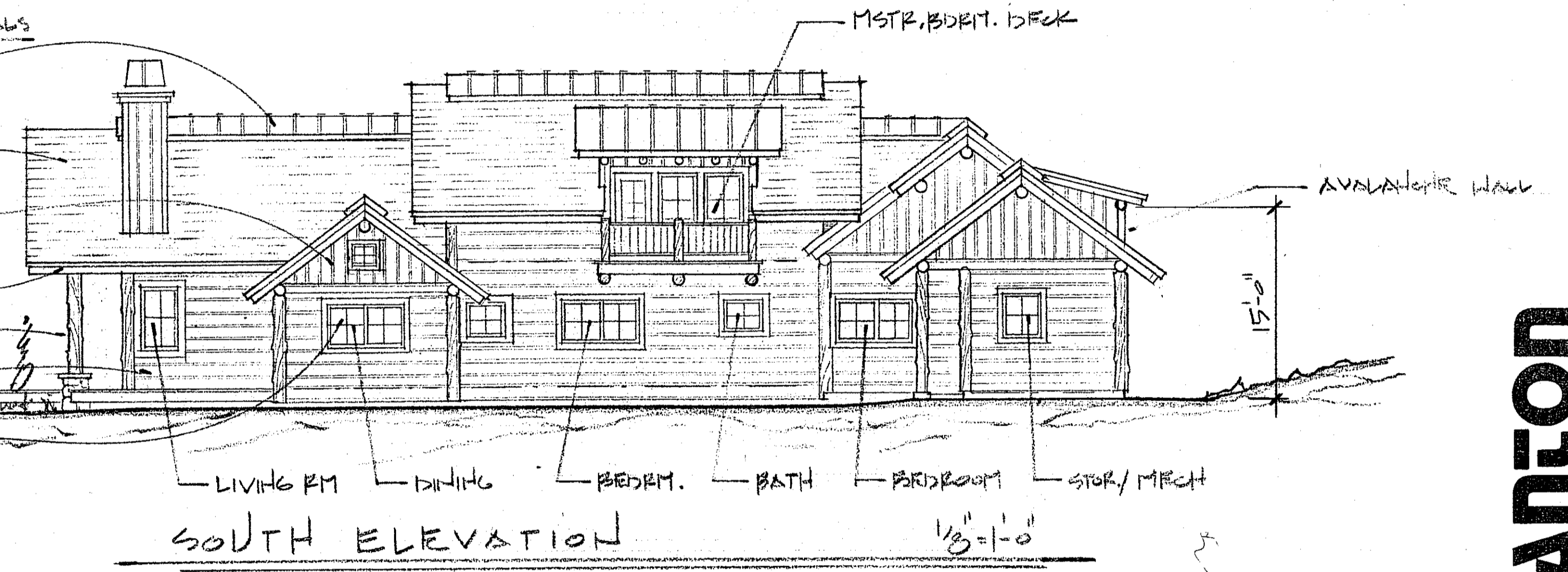
*Approved 1 May 2006
 132 east Chandler Road Spring
 -Jan Orger*

APRIL 28, 2006
 APRIL 21, 2006
 MARCH 31, 2006

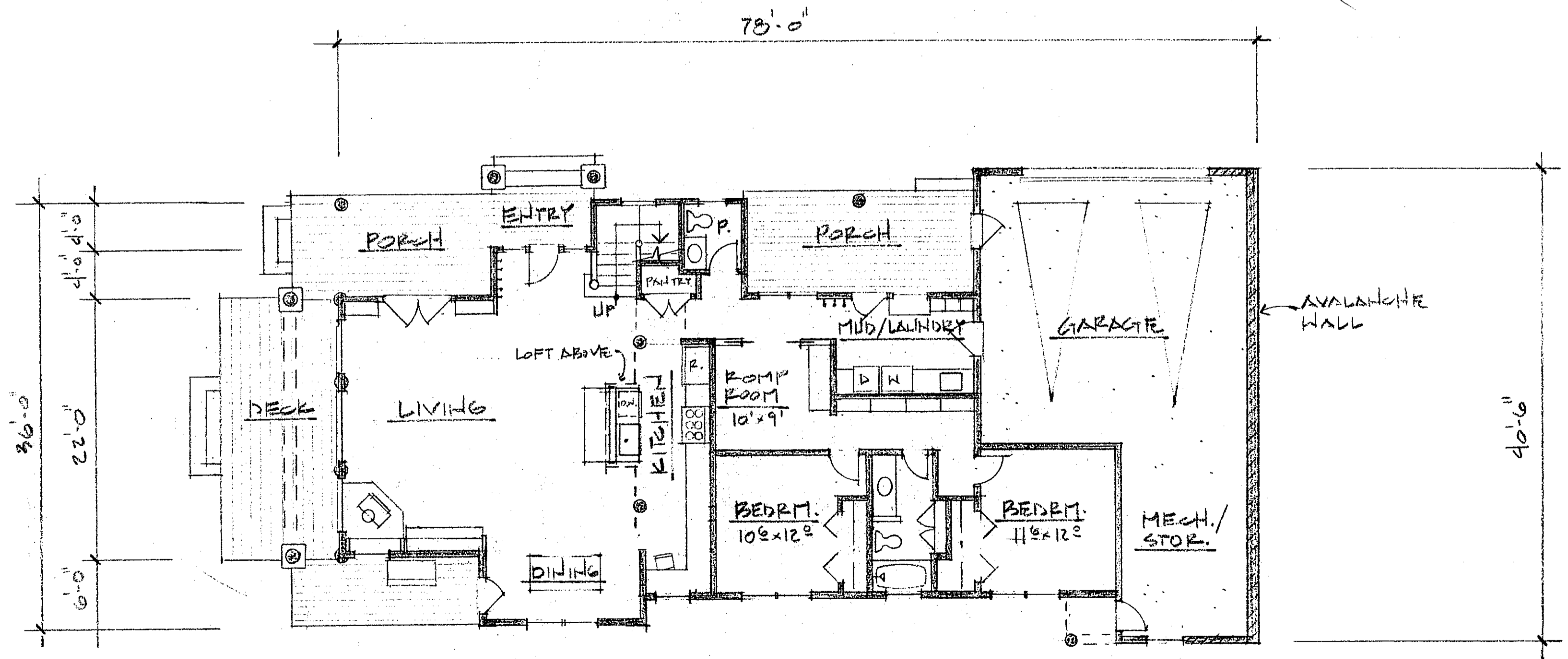


TYPICAL EXTERIOR MATERIALS

- STANDING SEAM METAL ROOF & BOSTONS & LOW-SLOPE ROOFS
- CLASS "A" COMPOSIT SHINGLE ROOF
- CEDAR BOARDS & BATT & CHAIRS
- CEDAR FASCIA & TRIM
- LOG POST & CORNERS
- 1/2 LOG SIDING
- METAL CLAD WOOD WINDOWS



UPPER LEVEL FLOOR PLAN
 SCHEME "A" 658 SQ. FT.



MAIN LEVEL FLOOR PLAN
 SCHEME "A" 1695 SQ. FT. LIVING 750 SQ. FT. GARAGE

SQUARE FOOTAGE
 LIVING: 2353 SQ. FT.
 GARAGE: 750 SQ. FT.

RUSCOTTO/LATHAM/BLANTON ARCHITECTURE P.A.

ELSBREE RESIDENCE
 LOWER BOARD RANCH
 BLAINE COUNTY, IDAHO

P.O. BOX 419 SUN VALLEY, IDAHO 83353
 208 726 5608
 copyright ©

"A"
 4/10
 3000
 00-12-00