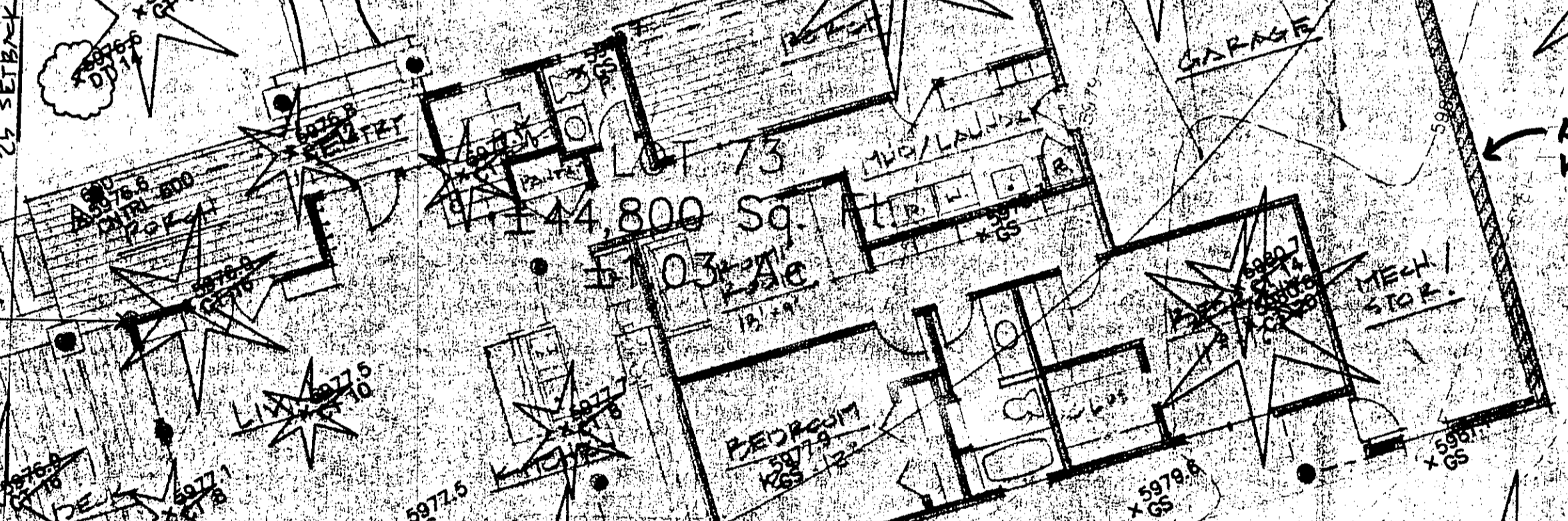


LOT 74
±22,237 Sq. Ft.
±0.51 Ac.
113 Board Loop

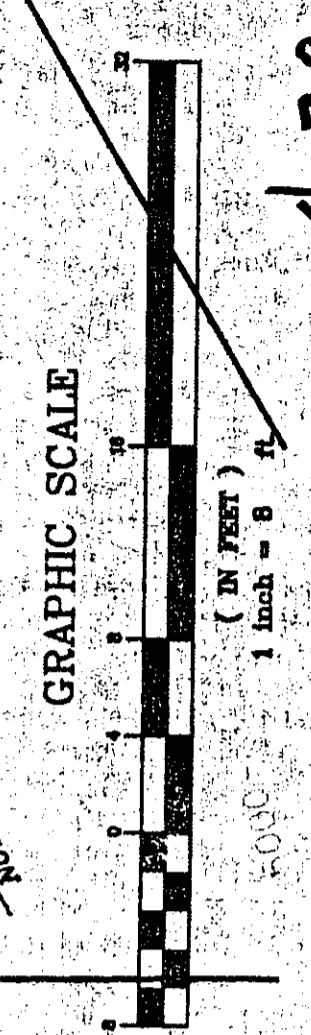


S60°54'06"E
245.02'

N62°36'37"W
221.08'

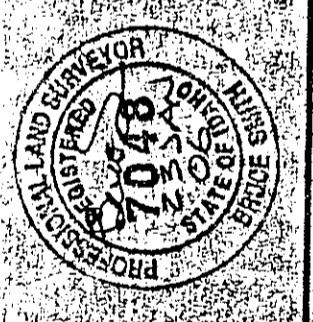
LOT 72
1.74 Ac

PLAN "B" 4.28.06



PROJECT PATH AND PRINT DATE: \\Snp173340\share1\Land Projects\2004_658_ELSBREE.dwg\658_Site.dwg - 11/7/2005 4:03:16 PM MST

Alpine Enterprises Inc.
Surveying, Mapping and Natural Hazards Consulting
280 Rivers Street East, Lower Level
P.O. Box 2037, Ketchum, ID 83340 USA
(208) 727-1988 (727-1987 fax)
email: alpine7@min.uspring.com



NO.	DATE	BY

4.28.06
A SITE SURVEY SHOWING
LOTS 73 & 74, BOARD'S LOWER RANCH
WITHIN S15, T.4N., R.17E., B.M., BLAINE COUNTY, IDAHO
PREPARED FOR MARK ELSBREE

- NOTES**
- 1) Basis of Bearings is Idaho State Plane Coordinate System, NAD83(1992), Central Zone, at Grid, in US Survey Feet. Vertical Datum is NGVD29, to match FEMA Floodplain Datum.
 - 2) Refer to the Plat Notes, Conditions, Covenants, and Restrictions on Original Plat.
 - 3) Utility locations are approximate and locations should be verified by Digline before any excavation.