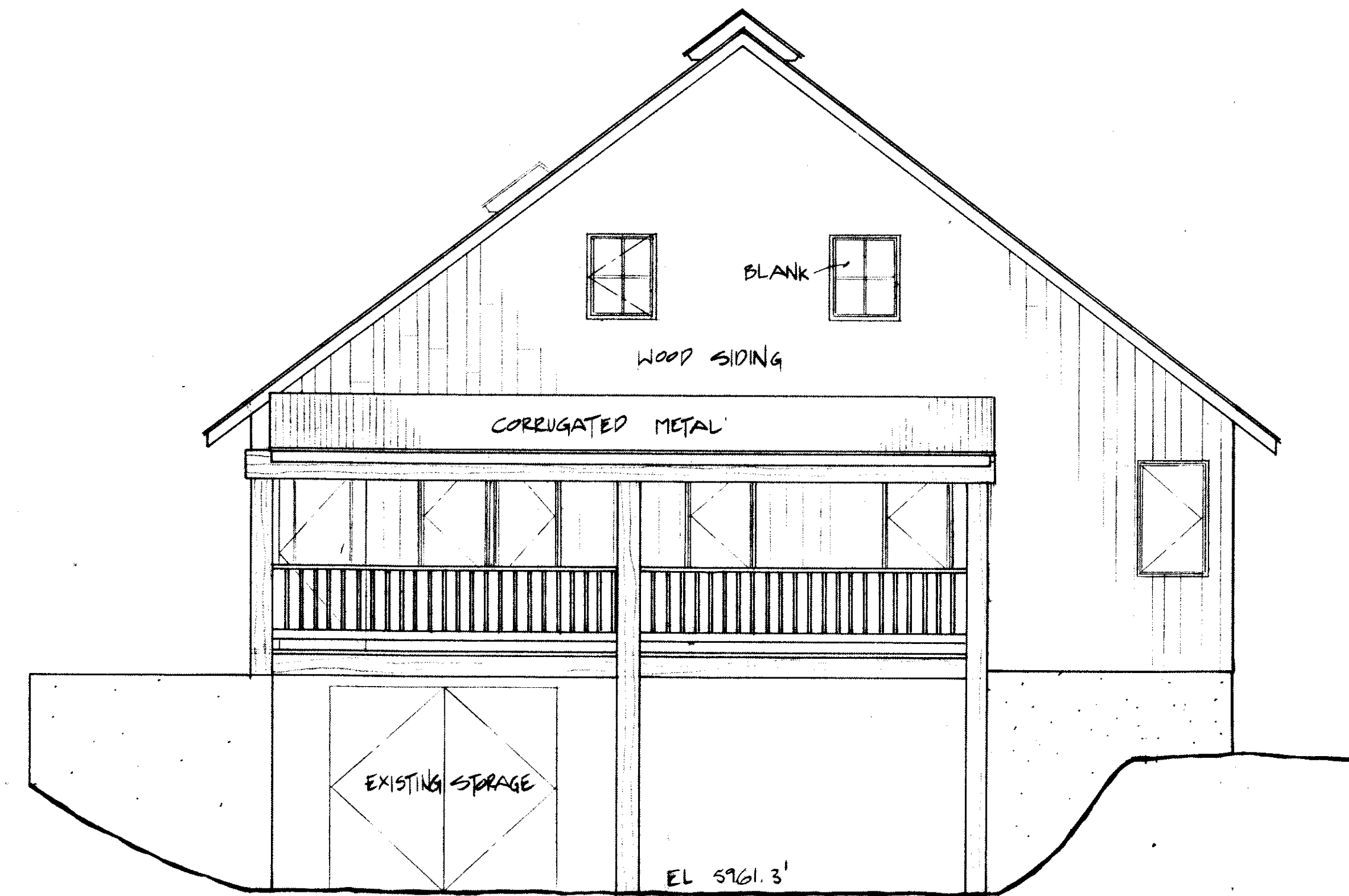
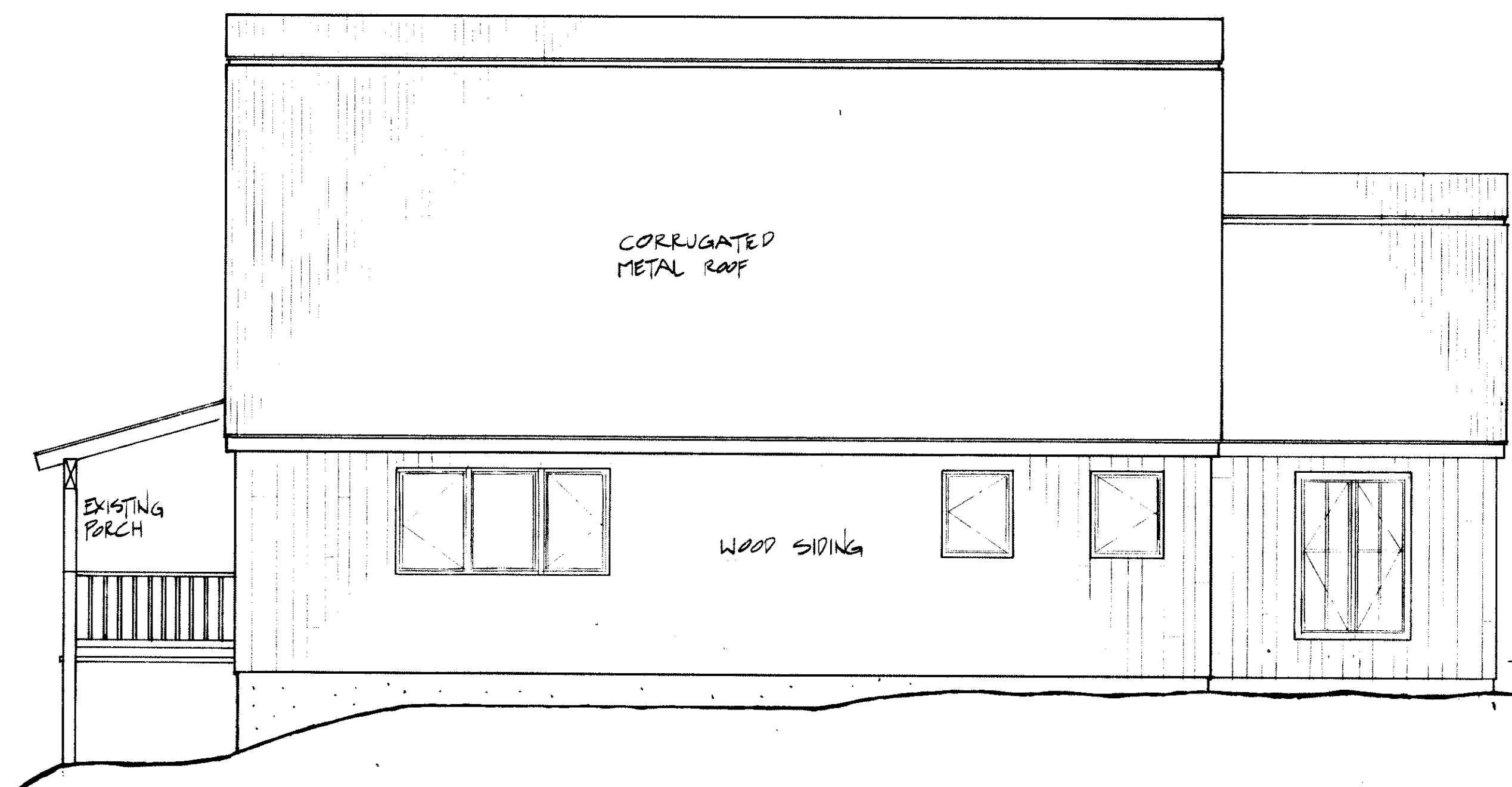


NORTH ELEVATION



WEST ELEVATION



SOUTH ELEVATION



EAST ELEVATION

APPROVED

SCALE: 1/4" = 1'-0"
 DATE: 07 FEB 06
 DRAWN BY: JST
 REV

JOHN CAMPBELL
 ARCHITECT
 P.O. BOX 4444
 KETCHUM, ID 83340
 208-726-3300 FAX 208-538-7682

LUCK BOARD RANCH RESIDENCE
 LOT 80, LOWER BOARD'S RANCH
 BLAINE COUNTY, ID

PROJECT THE LUCK REMODEL
 ELEVATIONS
 SHEET NO. A50